

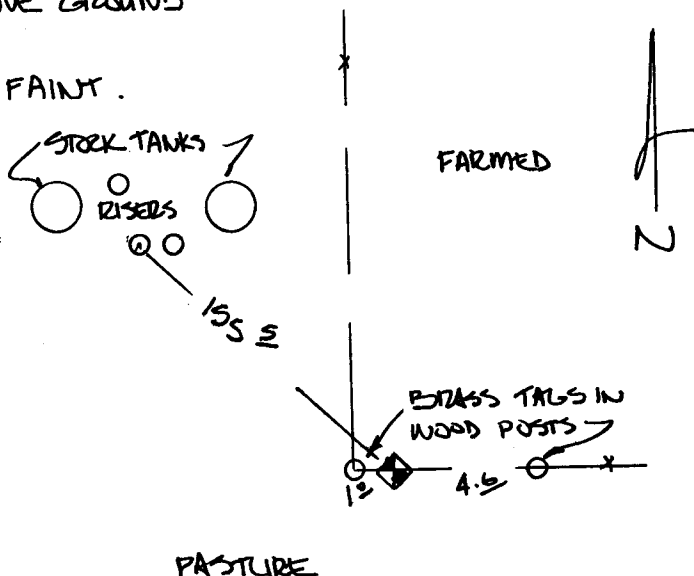
# State of Wyoming Corner Record

(In compliance with the **CORNER PERPETUATION AND FILING ACT**, Wyoming Statutes, 1977 Section 36-11-101, et. seq., and the Rules and Regulations of the Board of Professional Engineers and Professional Land Surveyors)

Reverse side of this form may be used if more space is needed.

Record of original survey and citation of source of historical information (if corner is lost or obliterated). Description of corner monumentation evidence found and/or monument and accessories established to perpetuate the location of this corner. Sketch of relative location of monument, accessories, and reference points with course and distance to adjacent corner(s) (if determined in this survey). Method and rationale for reestablishment of lost or obliterated corner.

FOUND 5" x 7" LIMESTONE 10" ABOVE GROUND  
AT FENCE CORNER.  
3 ≡ S SIDE 4 ≡ E SIDE VERY FAINT.  
REHABILITATED MONUMENT.

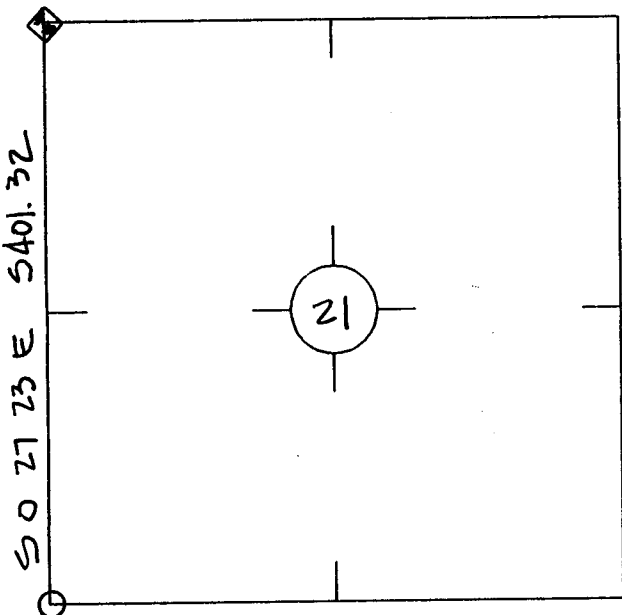


RECEIVING  
LARAMIE COUNTY CLERK  
CHEYENNE, WY

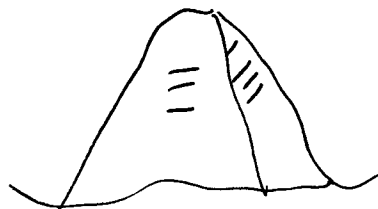
1995 MAR 23 PM 2:50

159531

Monument location



Monument Inscription



Date of Field Work: 2.9.95

Office Reference: 95012

## Cross Index Plat

	1	2	3	4	5	6	7	8	9	10	11	12	13	14	15	16	17	18	19	20	21	22	23	24	25		
A																											A
B																											B
C		6																								C	
D																										D	
E																										E	
F																										F	
G																										G	
H																										H	
J																										J	
K																										K	
L																										L	
M																										M	
N																										N	
O																										O	
P																										P	
Q																										Q	
R																										R	
S																										S	
T																										T	
U																										U	
V																										V	
W																										W	
X																										X	
Y																										Y	
Z																										Z	

Firm/Agency, Address

GEOSURV Inc.  
P.O. BOX 194  
121 N. HARRISON AVE.  
LAFAYETTE, COLORADO 80026  
Telephone: 303-666-0379

This corner record was prepared by me or under my direction and supervision.

SEAL & SIGNATURE



Corner Name NW SECTION COR Section 21, T 15 N, R 64 W, 6th P.M. Cross-Index No.: 915  
County: LARAMIE Wyoming